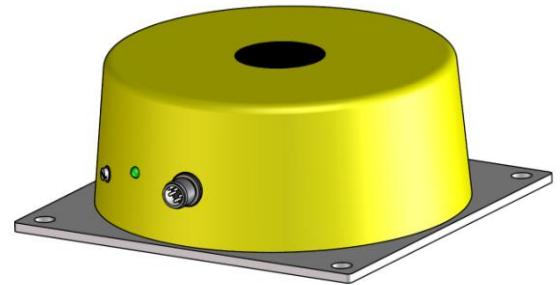


Inductive proximity switch with ProxiPlus. The higher switching distance increases the range of the sensor, provides more freedom for installation, more possibilities for detection and increases the service life.

- Plastic housing 163 mm with Aluminum mounting flange
- Rated operating distance 150 mm



Technical Data

| | |
|---|---------------------------------------|
| Type | IPOH 150.38 G S4 |
| Art.-No. | 2509A |
| Rated operating distance (S _n) | 150 mm |
| Output | PNP normally open and normally closed |
| Operating distance adjustable | yes |
| Target steel St37, 1 mm thick | 300 x 300 mm |
| Location at metal | non flush |
| Supply voltage (U _B) | 10 - 55 V DC |
| Ripple voltage | max. 15 % |
| Load current max. | 0 - 400 mA |
| Short- time load current | 0,8 A / 100 ms 2 A / 10 ms |
| Short circuit protection | yes, pulsing |
| No load current (I ₀) | < 10 mA |
| Voltage drop (U _d) | < 2 V |
| Operating frequency (f) | 12 Hz |
| Switching hysteresis (H) | 1 - 15 % |
| Ambient temperature | -25 ... +70 °C |
| Protection class | IP 67* |
| Connection | plug S4 (M12x1) |
| Function display | Duo LED red / green |
| green: supply voltage | BK4 open + WH2 closed |
| red: switched (target is present) | BK4 closed + WH2 open |
| red flashing: short-circuit / overload | BK4 + WH2 open |
| Housing material | Plastic PBT / Al |
| Accessories (please order separately) | Art.-No. |
| Suitable angular connector with moulded | 9841D |
| 2 m connection cable | |

* The protection class is complied with when the protection screw for the adjusting device is screwed in.

Diagram of Connections

