

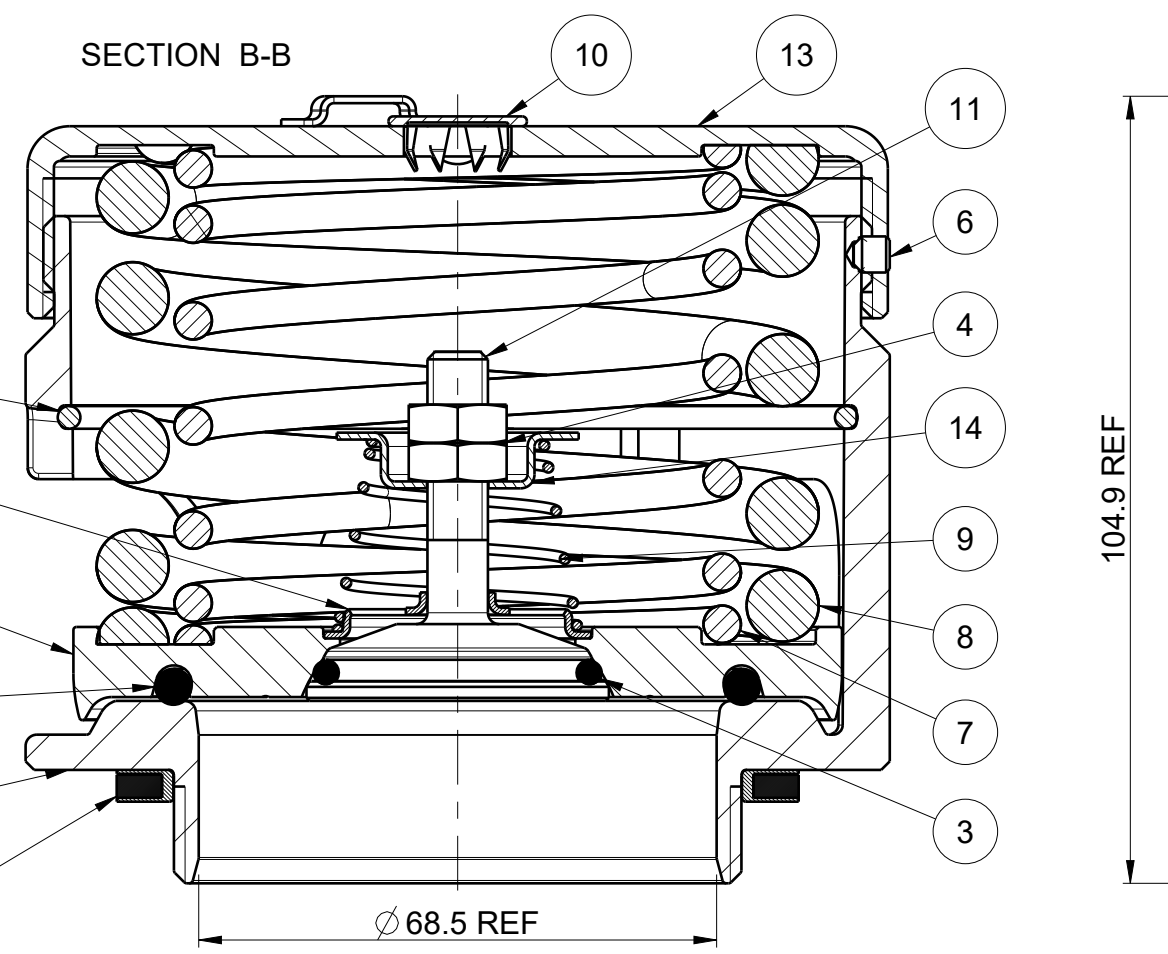
16	1860/0100	MK3 SUPER MAXI HIGHFLOW BODY MACHINING	1	316 STST
15	1860/005XXX	MAXI PRESSURE PLATE (SEE TABLE)	1	316 STST
14	1860/0005	VACUUM SPRING PAD	1	316 STST
13	1760/0005XX	TOP CAP MACHINING	1	304 STST
12	10986/3	SPRING PAD	1	316 STST
11	10983X	VACUUM POPPET (SEE TABLE)	1	316 STST
10	10978	STAINLESS PLUG	1	ST ST
9	7104-XXX	VACUUM SPRING (SEE TABLE)	1	316 STST
8	6104-XXXX	OUTER SPRING (SEE TABLE)	1	STAINLESS STEEL
7	6104-XXXX	INNER SPRING (SEE TABLE)	1	STAINLESS STEEL
6	5121-001	3/16"BSW.3/16"LG SOCKETHEAD	1	304 STST
5	5120-067	RETAINING RING CLIP	1	316 STST
4	5112-004	M8 HALF NUT	2	304 STST
3	5005-XXX	VACUUM SEAL	1	SEE TABLE
2	5005-XXX	PRESSURE SEAL	1	SEE TABLE
1	5005-XXX	TANK GASKET (SEE TABLE)	1	SEE TABLE

010/TXXXX (PFA)	1860/0056XX	5005-101PFA	10983V/3	5005-108HPFA	5005-026	C.N.A.F.	-55° C (-67° F)	260° C (500° F)
010/5XXXX (FORTYT/EPDM)	1860/0056XX	5005-101	10983V/3	ORB217EP	5005-046	PTFE ENVELOPE BLACK RUBBER	-20° C (-4° F)	150° C (302° F)
010/1XXXX (FORTYT)	1860/0056XX	5005-101	10983V/3	5005-108H	5005-046	PTFE ENVELOPE BLACK RUBBER	-55° C (-67° F)	200° C (392° F)
010/0XXXX (VITON)	1860/0057XX	5005-102	10983V/3	5005-173	5005-046	PTFE ENVELOPE BLACK RUBBER	-20° C (-4° F)	200° C (392° F)
PART NUMBER	PRESSURE PLATE	PRESSURE 'O' RING	VACUUM POPPET	VACUUM 'O' RING	TANK GASKET PART No.	TANK GASKET MATERIALS	MIN TEMP	MAX TEMP

DRAWING STATUS		PRODUCTION			
REVISION	57	SIG	J KEY	28-Sep-18	
LASER MARKING UPDATED.					

Index	Part Number	Description	Quantity	Material					
010/X45XX	6104-0136	6104-0216	1860/005X65	1760/000565	3.10	[45.0]	2.951	3.72	[54.0]
010/X44XX	6104-0080	6104-0252	1860/005X65	1760/000565	3.03	[44.0]	2.899	3.64	[52.8]
010/X43XX	6104-0048	6104-0294	1860/005X65	1760/000565	2.97	[43.0]	2.847	3.56	[51.6]
010/X42XX	6104-0048	6104-0294	1860/005X65	1760/000565	2.90	[42.0]	2.796	3.48	[50.4]
010/X41XX	6104-0048	6104-0294	1860/005X65	1760/000565	2.83	[41.0]	2.744	3.39	[49.2]
010/X40XX	-	6104-0310	1860/005X65	1760/000565	2.76	[40.0]	2.692	3.31	[48.0]
010/X39XX	-	6104-0310	1860/005X65	1760/000565	2.69	[39.0]	2.641	3.23	[46.8]
010/X38XX	6104-0048	6104-0252	1860/005X65	1760/000565	2.62	[38.0]	2.589	3.14	[45.6]
010/X37XX	6104-0048	6104-0252	1860/005X65	1760/000565	2.55	[37.0]	2.537	3.06	[44.4]
010/X36XX	6104-0048	6104-0252	1860/005X65	1760/000565	2.48	[36.0]	2.485	2.98	[43.2]
010/X35XX	-	6104-0294	1860/005X65	1760/000565	2.41	[35.0]	2.434	2.90	[42.0]
010/X34XX	-	6104-0294	1860/005X65	1760/000565	2.34	[34.0]	2.382	2.81	[40.8]
010/X33XX	-	6104-0294	1860/005X65	1760/000565	2.28	[33.0]	2.330	2.73	[39.6]
010/X32XX	-	6104-0252	1860/005X65	1760/000565	2.19	[31.8]	2.268	2.63	[38.2]
010/X31XX	-	6104-0252	1860/005X65	1760/000565	2.14	[31.0]	2.227	2.57	[37.2]
010/X30XX	-	6104-0252	1860/005X65	1760/000565	2.07	[30.0]	2.175	2.48	[36.0]
010/X29XX	6104-0048	6104-0184	1860/005X65	1760/000565	2.00	[29.0]	2.124	2.40	[34.8]
010/X28XX	6104-0048	6104-0184	1860/005X65	1760/000565	1.93	[28.0]	2.072	2.32	[33.6]
010/X27XX	-	6104-0216	1860/005X65	1760/000565	1.86	[27.0]	2.020	2.23	[32.4]
010/X26XX	-	6104-0216	1860/005X65	1760/000565	1.79	[26.0]	1.969	2.15	[31.2]
010/X25XX	-	6104-0216	1860/005X65	1760/000565	1.72	[25.0]	1.917	2.07	[30.0]
010/X24XX	-	6104-0216	1860/005X65	1760/000565	1.66	[24.0]	1.865	1.99	[28.8]
010/X23XX	-	6104-0184	1860/005X65	1760/000565	1.59	[23.0]	1.813	1.90	[27.6]
010/X22XX	6104-0165	-	1860/005X65	1760/000565	1.52	[22.0]	1.762	1.82	[26.4]
010/X21XX	6104-0165	-	1860/005X65	1760/000565	1.45	[21.0]	1.710	1.74	[25.2]
010/X20XX	6104-0155	-	1860/005X65	1760/000565	1.38	[20.0]	1.658	1.66	[24.0]
010/X19XX	6104-0155	-	1860/005X65	1760/000565	1.31	[19.0]	1.607	1.57	[22.8]
010/X18XX	6104-0136	-	1860/005X65	1760/000565	1.24	[18.0]	1.555	1.49	[21.6]
010/X17XX	6104-0124	-	1860/005X65	1760/000565	1.17	[17.0]	1.503	1.41	[20.4]
010/X16XX	6104-0112	-	1860/005X65	1760/000565	1.10	[16.0]	1.452	1.32	[19.2]
010/X15XX	6104-0112	-	1860/005X65	1760/000565	1.03	[15.0]	1.400	1.24	[18.0]
010/X14XX	6104-0112	-	1860/005X65	1760/000565	0.97	[14.0]	1.348	1.16	[16.8]
010/X13XX	6104-0112	-	1860/005X65	1760/000565	0.90	[13.0]	1.297	1.08	[15.6]
010/X12XX	6104-0085	-	1860/005X65	1760/000565	0.83	[12.0]	1.245	0.99	[14.4]
010/X11XX	6104-0080	-	1860/005X65	1760/000565	0.76	[11.0]	1.193	0.91	[13.2]
010/X10XX	6104-0080	-	1860/005X65	1760/000565	0.69	[10.0]	0.688	0.83	[12.0]
010/X09XX	6104-0067	-	1860/005X65	1760/000565	0.62	[9.0]	0.654	0.74	[10.8]
010/X08XX	6104-0067	-	1860/005X65	1760/000565	0.55	[8.0]	0.618	0.66	[9.6]
010/X07XX	6104-0056	-	1860/005X65	1760/000565	0.48	[7.0]	0.581	0.58	[8.4]
010/X06XX	6104-0056	-	1860/005X65	1760/000565	0.41	[6.0]	0.539	0.50	[7.2]
010/X05XX	6104-0048	-	1860/005X65	1760/000565	0.34	[5.0]	0.493	0.41	[6.0]
010/X04XX	6104-0032	-	1860/005X65	1760/000565	0.28	[4.0]	0.443	0.33	[4.8]
010/X03XX	6104-0024	-	1860/005X65	1760/000565	0.21	[3.0]	0.384	0.25	[3.6]
010/X02XX	6104-0017	-	1860/005X65	1760/000565	0.14	[2.0]	0.315	0.17	[2.4]

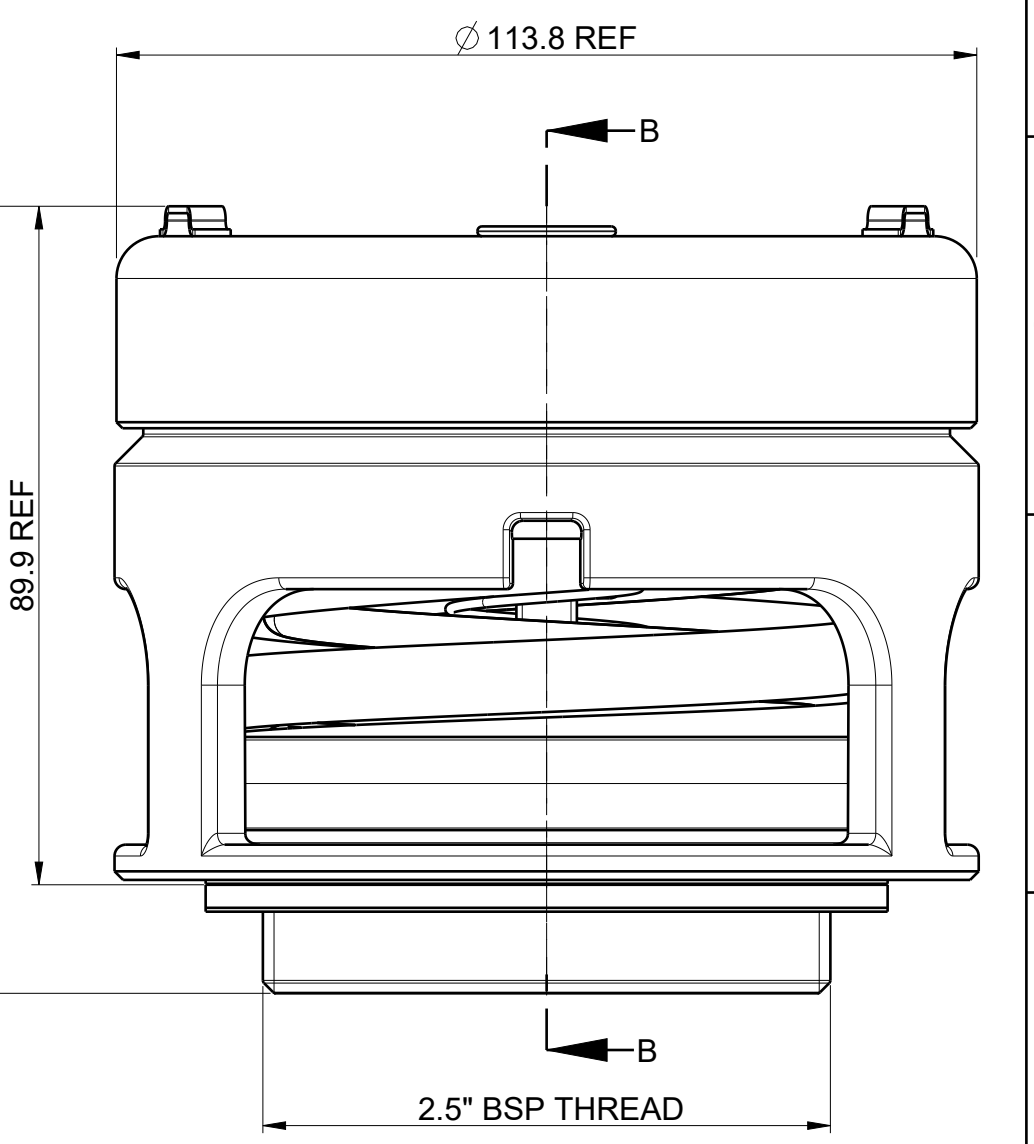
WHEN USING VITON & EPDM SEALS, GLUE IN PLACE IN THE PRESSURE PLATE USING LOCTITE 480



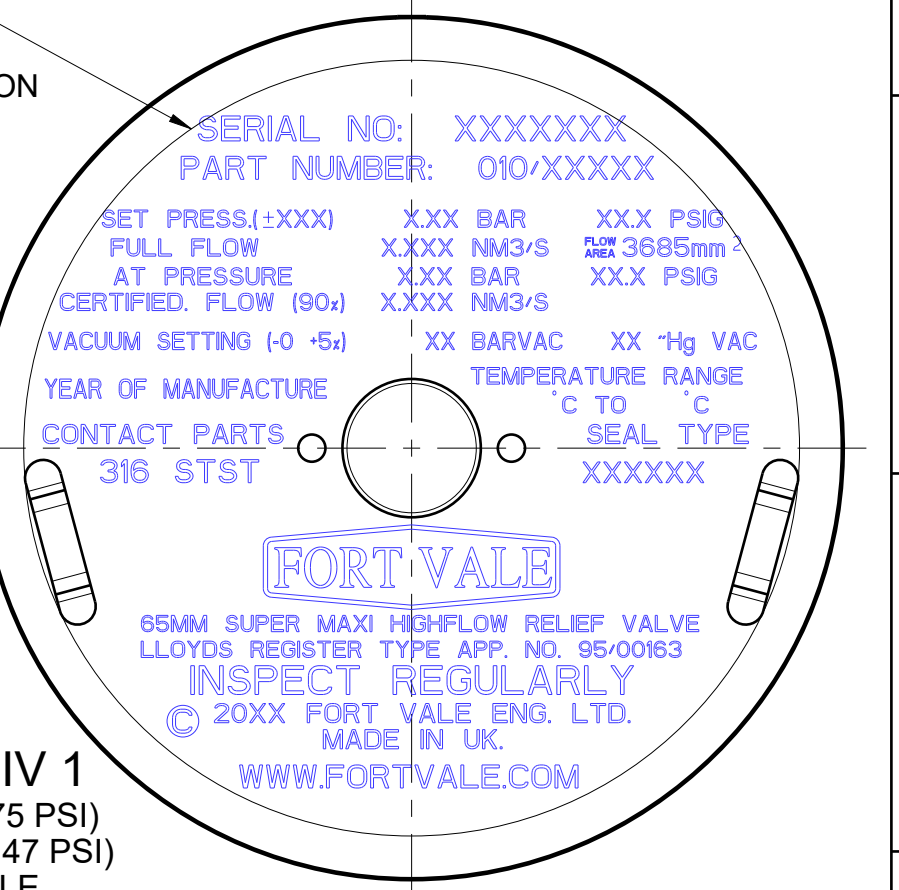
NOTE:
SET PRESSURE TO BE DEFINED AT FIRST BUBBLE

OVER 4.827 [70.0]	±3%	
3.34 TO 4.827 [48.4 TO 70.0]	±0.138 [2.0]	
UNDER 3.34 [48.4]	±0.1 [1.5]	
SET PRESSURE RANGE BAR [PSI]	SET PRESSURE TOLERANCE BAR [PSI]	
ALLOWABLE SET PRESSURE TOLERANCE TO ASME UG 134(d)(1) AND BS EN ISO 4126-1 2013		
PART NUMBER	VACUUM SETTING BAR [Hg]	VACUUM SPRING

010/X75XX	6104-0600	SPRING PAIR	1860/005X65	1760/000565	5.17	[75.0]	4.501	6.21	[90.0]
010/X72XX	6104-0600	SPRING PAIR	1860/005X65	1760/000565	4.97	[72.0]	4.346	5.96	[86.4]
010/X70XX	6104-0600	SPRING PAIR	1860/005X65	1760/000565	4.83	[70.0]	4.243	5.79	[84.0]
010/X66XX	6104-0485	SPRING PAIR	1860/005X65	1760/000565	4.55	[66.0]	4.036	5.46	[79.2]
010/X64XX	6104-0485	SPRING PAIR	1860/005X65	1760/000565	4.41	[64.0]	3.933	5.30	[76.8]
010/X63XX	6104-0485	SPRING PAIR	1860/005X65	1760/000565	4.40	[63.8]	3.922	5.28	[76.6]
010/X62XX	6104-0485	SPRING PAIR	1860/005X65	1760/000565	4.28	[62.0]	3.829	5.13	[74.4]
010/X61XX	6104-0485	SPRING PAIR	1860/005X65	1760/000565	4.21	[61.0]	3.778	5.05	[73.2]
010/X60XX	6104-0195	6104-0294	1860/005X65	1760/000565	4.14	[60.0]	3.726	4.97	[72.0]
010/X59XX	6104-0195	6104-0294	1860/005X65	1760/000565	4.07	[59.0]	3.674	4.88	[70.8]
010/X58XX	6104-0195	6104-0294	1860/005X65	1760/000565	4.00	[58.0]	3.623	4.80	[69.6]
010/X57XX	6104-0195	6104-0294	1860/005X65	1760/000565	3.93	[57.0]	3.571	4.72	[68.4]
010/X56XX	6104-0195	6104-0294	1860/005X65	1760/000565	3.86	[56.0]	3.519	4.63	[67.2]
010/X55XX	6104-0112	6104-0310	1860/005X65	1760/000565	3.79	[55.0]	3.468	4.55	[66.0]
010/X54XX	6104-0422	SPRING PAIR	1860/005X65	1760/000565	3.71	[53.8]	3.406	4.45	[64.6]
010/X53XX	6104-0422	SPRING PAIR	1860/005X65	1760/000565	3.66	[53.0]	3.364	4.39	[63.6]
010/X52XX	6104-0422	SPRING PAIR	1860/005X65	1760/000565	3.59	[52.0]	3.313	4.30	[62.4]
010/X51XX	6104-0195	6104-0184	1860/005X65	1760/000565	3.52	[51.0]	3.261	4.22	[61.2]
010/X50XX	6104-0195	6104-0184	1860/005X65	1760/000565	3.45	[50.0]	3.209	4.14	[60.0]
010/X49XX	6104-0165	6104-0216	1860/005X65	1760/000565	3.38	[49.0]	3.157	4.06	[58.8]
010/X48XX	6104-0112	6104-0252	1860/005X65	1760/000565	3.31	[48.0]	3.106	3.97	[57.6]
010/X47XX	6104-0112	6104-0252	1860/005X65	1760/000565	3.24	[47.0]	3.054	3.89	[56.4]
010/X46XX	6104-0136	6104-0216	1860/005X65	1760/000565	3.17	[46.0]	3.002	3.81	[55.2]



CAP TO BE LASER MARKED AS SHOWN WITH X'S TO BE FILLED IN WITH CORRECT INFORMATION UPON COMPLETION OF ASSEMBLY



DESIGN CODE : ASME VIII DIV 1
DESIGN PRESSURE (MAWP) : 5.2 BAR (75 PSI)
SERVICE TEST PRESSURE : 10.1 BAR (147 PSI)
MAX DESIGN TEMPERATURE : SEE TABLE
MIN DESIGN TEMPERATURE : SEE TABLE

FORT VALE © FORT VALE ENGINEERING LTD 2018.		SALES@FORTVALE.COM WWW.FORTVALE.COM	
ENGLAND, USA, CHINA NETHERLANDS, SINGAPORE		DO NOT SCALE- IF IN DOUBT ASK	
UNLESS OTHERWISE STATED		MATERIAL: VARIOUS	
SURFACE FINISH 3.2um MAX CORNER RADII 0.8 CORNER CHAMFER 1.0 X 45° REMOVE ALL BURRS AND SHARP EDGES		ISO9001:2008 REGISTERED FIRM: LRQ4007111	
DESCRIPTION 2.5"BSP SUPERMAXI HIGHFLOW R/V TYPE MK3 2.5" SUPER MAXI HIGH FLOW		SHEET 1 OF 1 DRAWN BY: JTP DATE: 16-07-99 DRG.NO. 010/XXXXX	