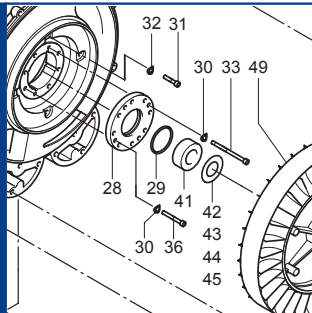


# SV 7.330



**SERVICE**

**BECKER**  
D-42279 Wuppertal  
www.becker-international.com

year

No **A**  **Index Variante**

type **SV 7.330-XX**

frequency  Hz

speed  min<sup>-1</sup>

power required  kW

inlet capacity  m<sup>3</sup>/h

pressure +  mbar

vacuum -  mbar

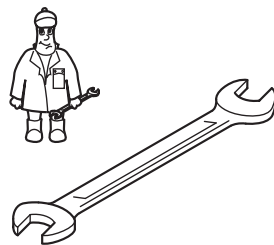
Made in  Germany



**Ersatzteilliste**  
Spare parts list  
Liste de pièces de rechange  
Listino pezzi di ricambio  
Lista de piezas de recambio  
Lista de peças sobresselentes  
Reserveonderdelenlijst  
Atsarginių dalių sąrašas  
Varuosad nimekirja  
Rezerves daļu saraksts

**Reservedelsliste**  
Reservdelslista  
Varaosaluettelo  
Reservedelsliste  
Wykaz części zamiennych  
Tartalékalkatrész lista  
Seznam náhradních dílů  
Seznam nadomestnih delov  
Zoznam náhradných dielov  
Rezervni dijelovi popis

**Lista pieselor de schimb**  
Páirteanna spártha liosta  
Κατάλογος ανταλλακτικών  
Yedek parça listesi  
Списък на резервните части  
Перечень запасных частей  
スペアパーツリスト  
예비 부품 목록  
备用零件目录



| Pos. | Menge <sup>1)</sup><br>Quantity<br>Quantité<br>Quantità<br>Cantidad | Bestell-Nr.<br>Ident No.<br>No. Identification<br>No. Identificazione<br>No. de pedido | Bezeichnung<br>Description<br>Designation<br>Designazione<br>Descripción                   |
|------|---|--|--|
| 125  | 1   | 909548 00000   | Filterpatrone, Filter cartridge, Cartouche Filtrante, Cartuccia filtro, Cartucho de filtro |

<sup>1)</sup> erforderliche Bestellmenge / necessary order quantity / quantité nécessaire / quantità di ordinazione necessari / cantidad necesario

**Wartung**  
**Maintenance**  
**Entretien**  
**Manutenzione**  
**Mantenimiento**



**SERVICE**  
[www.becker-international.com](http://www.becker-international.com)  
Sales and service network

SV 7.330/1 Standard



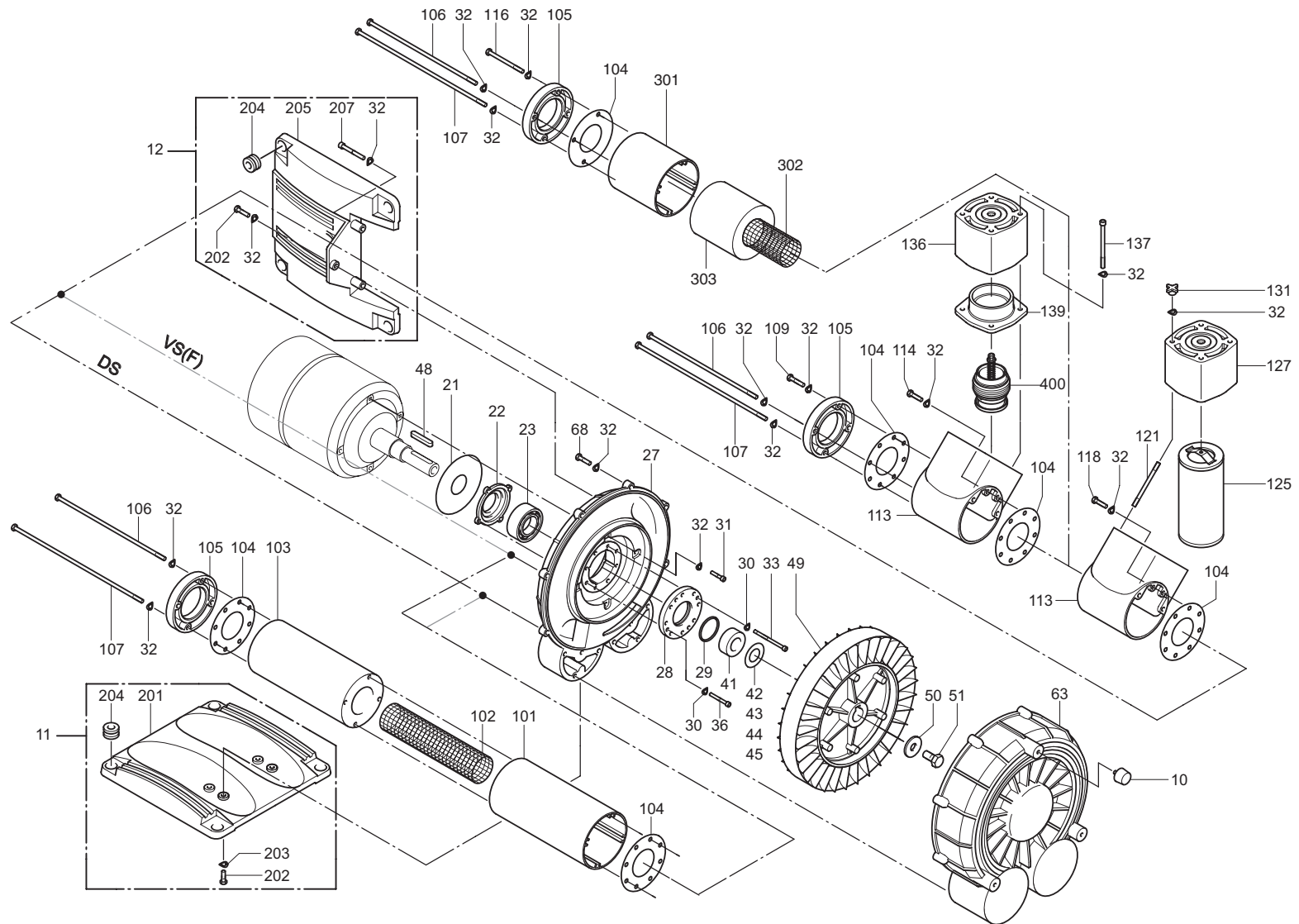
Variante



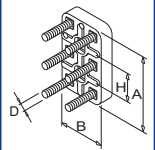
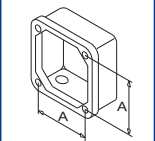
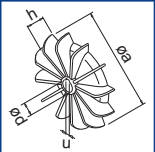
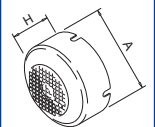
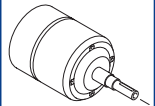
SV 7.330/1-XX

① /1-05  
 mit Korrosionsschutz  
 with corrosion protection  
 avec protection contre la corrosion  
 con protezione anti-corrosione  
 con protección contra la corrosión

② /1-401  
 mit Frequenzumrichter  
 with frequency inverter  
 avec convertisseur de fréquence  
 con convertitore di frequenza  
 con convertidor de frecuencia



SERVICE ?



**SV 7.330/2 Standard**

**Variante**

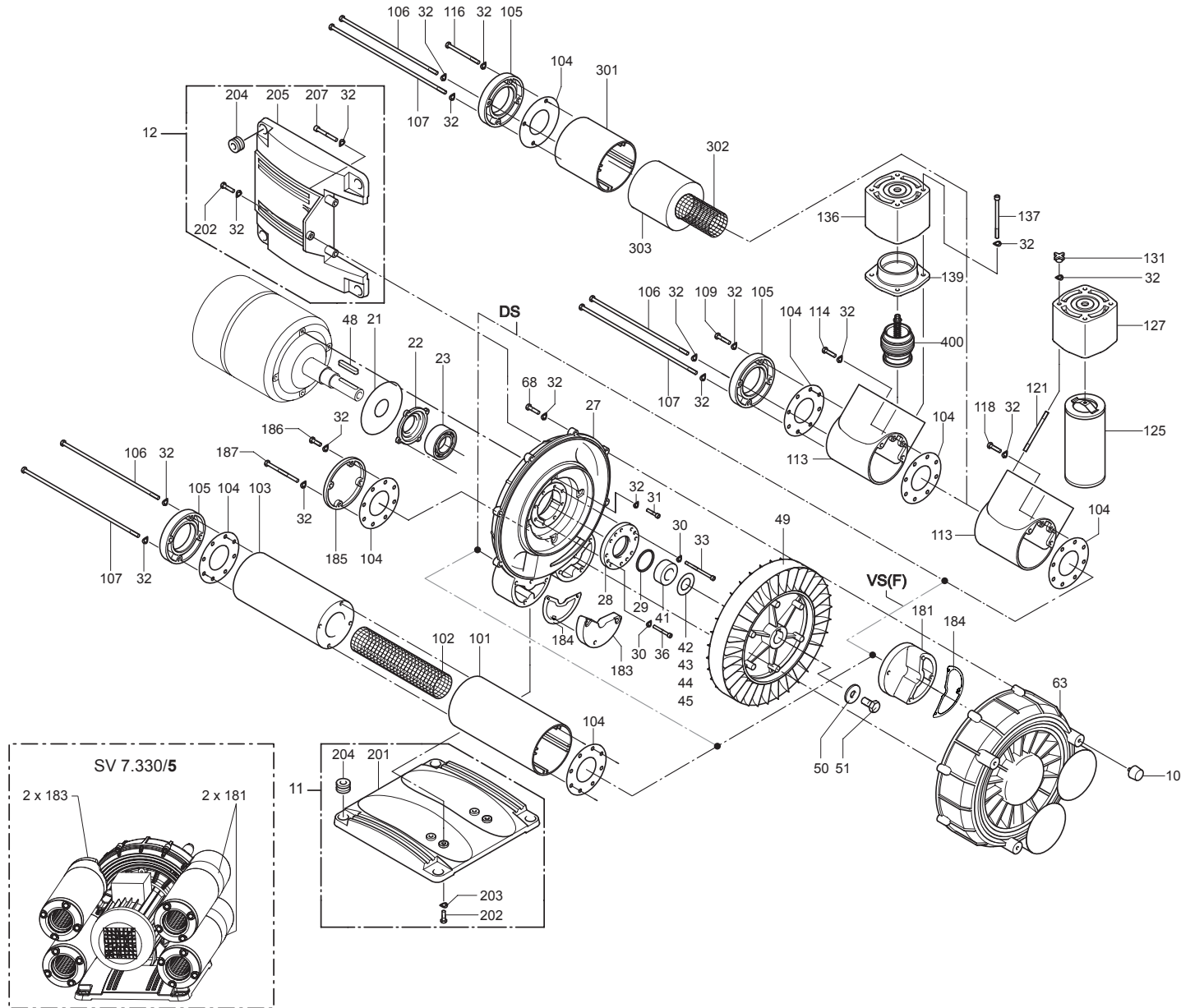
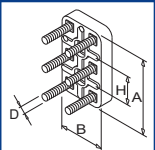
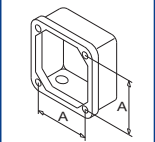
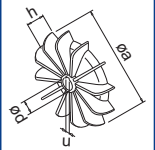
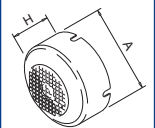
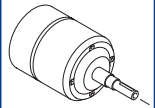
**SV 7.330/2-XX**


① /2-05  
mit Korrosionsschutz  
with corrosion protection  
avec protection contre la corrosion  
con protezione anti-corrosione  
con protección contra la corrosión

② /2-401  
mit Frequenzumrichter  
with frequency inverter  
avec convertisseur de fréquence  
con convertitore di frequenza  
con convertidor de frecuencia


③ /2-501  
Sonderausführung  
Special design  
Fabrication spéciale  
Modello speciale  
Versión especial

④ /2-600  
Sonderausführung  
Special design  
Fabrication spéciale  
Modello speciale  
Versión especial


**SERVICE**


| INDEX    | Pos.         | Bestell Nr.                            | Beschreibung   |  |
|----------|--------------|--|--|---|
| SV 7.330 | U            | 570400 19800                           | <b>UMBAUSATZ /1➔/2</b><br>(POS: 32, 104, 181, 183, 184, 185, 186, 187) |   |
|          | 10           | 741315 00000                           | GUMMIPUFFER  |   |
|          | 11           | 515100 19800                           | FUSS   |   |
|          | 12           | 515101 19800                           | FUSS, SEITLICH   |   |
|          | 21           | 018300 94000                           | SCHUTZSCHEIBE  |   |
|          | 22           | 001103 94001                           | LAGERDECKEL  |   |
|          | 23           | 906611 10000                           | WÄLZLAGER  |   |
|          | 27           | 000100 19800                           | GEHÄUSE  |   |
|          | 28           | 001103 19801                           | LAGERDECKEL  |   |
|          | 29           | 911308 00000                           | DICHTUNGSSCHLAUCH  |   |
|          | 30           | 948503 00000                           | FEDERING   |   |
|          | 31           | 945308 00000                           | INNENSECHSKANTSCHRAUBE   |   |
|          | 32           | 951703 00000                           | FEDERSCHEIBE   |   |
|          | 33           | 945373 00000                           | INNENSECHSKANTSCHRAUBE   |   |
|          | 36           | 945313 00000                           | INNENSECHSKANTSCHRAUBE   |   |
|          | 41           | 013900 19800                           | DICHTBUCHSE  |   |
|          | 42           | 911468 00000                           | DISTANZSCHEIBE 32X55X0,025   |   |
|          | 43           | 911469 00000                           | DISTANZSCHEIBE 32X55X0,050   |   |
|          | 44           | 911470 00000                           | DISTANZSCHEIBE 32X55X0,100   |   |
|          | 45           | 911471 00000                           | DISTANZSCHEIBE 32X55X0,200   |   |
|          | 48           | 947742 00000                           | PASSFEDER  |   |
|          | 49           | 000600 19800                           | LAUFRAD  |   |
|          | 50           | 001900 24000                           | SICHERUNGSBLECH  |   |
|          | 51           | 001800 24000                           | WELLENABSCHLUSSCHRAUBE   |   |
|          | 63           | 000200 19800                           | GEHÄUSEDECKEL  |   |
|          | 68           | 945225 00000                           | SECHSKANTSCHRAUBE  |   |
|          | 101          | 007400 19800                           | SCHALLDÄMPFERGEHÄUSE   |   |
| 102.1    | 007600 94000 | SIEBROHR (SV 7.330/1-01)               |  |   |
| 102.2    | 007601 94000 | SIEBROHR (SV 7.330/2-01 + SV 7.330/5)  |  |   |
| 103      | 907704 10000 | DÄMPFER                                |  |   |
| 104      | 907500 19800 | DICHTUNG                               |  |   |
| 105      | 007805 19800 | GEWINDEFLANSCH                         |  |   |
| 106      | 903808 01000 | ZUGANKERSCHRAUBE                       |  |   |
| 107      | 903809 01000 | ZUGANKERSCHRAUBE                       |  |   |
| 109      | 945226 00000 | SECHSKANTSCHRAUBE                      |  |   |
| 113      | 040100 19800 | FILTERGEHÄUSE                          |  |   |
| 114      | 945321 00000 | INNENSECHSKANTSCHRAUBE                 |  |   |
| 116      | 903807 01000 | ZUGANKERSCHRAUBE                       |  |   |
| 118      | 945372 00000 | INNENSECHSKANTSCHRAUBE                 |  |   |
| 121      | 951038 00000 | STIFTSCHRAUBE                          |  |   |
| 125      | 909548 00000 | <b>FILTERPATRONE (1x)<sup>1)</sup></b> |  |   |
| 127      | 040202 19800 | FILTERDECKEL                           |  |   |
| 131      | 921503 00000 | STERNGRIFF                             |  |   |
| 136      | 040203 19800 | FILTERDECKEL                           |  |   |
| 137      | 945383 00000 | INNENSECHSKANTSCHRAUBE                 |  |   |
| 139      | 016600 19800 | ANSCHLUSSSTÜCK                         |  |   |
| 181      | 015500 19800 | REDUZIERSTÜCK                          |  |   |
| 183      | 005601 19800 | DECKEL                                 |  |   |
| 184      | 907502 19800 | DICHTUNG                               |  |   |
| 185      | 005600 19800 | DECKEL                                 |  |   |
| 186      | 945222 00000 | SECHSKANTSCHRAUBE                      |  |   |
| 187      | 945155 00000 | SECHSKANTSCHRAUBE                      |  |   |
| 201      | 015102 19800 | FUSS                                   |  |   |
| 202      | 945224 00000 | SECHSKANTSCHRAUBE                      |  |   |
| 203      | 949451 00000 | UNTERLEGSCHNEIBE                       |  |   |
| 204      | 951906 00000 | KABELTÜLLE                             |  |   |
| 205      | 015101 19800 | FUSS                                   |  |   |
| 207      | 945328 00000 | INNENSECHSKANTSCHRAUBE                 |  |   |

<sup>1)</sup> erforderliche Bestellmenge / Wartung (F / DSF / VSF)

| INDEX | Pos.  | Bestell Nr.  | Beschreibung                                 |  |
|-------|-------|--------------|--|--|
|       | 301   | 007401 19800 | SCHALLDÄMPFERGEHÄUSE                         |  |
|       | 302   | 907600 80000 | SIEBROHR                                     |  |
|       | 303   | 907704 20000 | DÄMPFER                                      |  |
|       | 400.1 | 733701 99609 | VENTILEINSATZ, SV 7.330/1; 3KW; VAKUUM       |  |
|       | 400.2 | 733702 99609 | VENTILEINSATZ, SV 7.330/1; 3+4KW; DRUCK      |  |
|       | 400.3 | 733703 99609 | VENTILEINSATZ, SV 7.330/2; 3KW; DRUCK+VAKUUM |  |

<sup>1)</sup> erforderliche Bestellmenge / Wartung (F / DSF / VSF)

| INDEX    | Pos.  | Ident No.    | Description   |
|----------|-------|--------------|---|
| SV 7.330 | U     | 570400 19800 | <b>CONVERSION KIT /1➔/2</b><br>(POS: 32, 104, 181, 183, 184, 185, 186, 187) |
|          | 10    | 741315 00000 | RUBBER BUFFER   |
|          | 11    | 515100 19800 | FOOT  |
|          | 12    | 515101 19800 | FOOT, LATERAL   |
|          | 21    | 018300 94000 | WASHER  |
|          | 22    | 001103 94001 | BEARING COVER   |
|          | 23    | 906611 10000 | BALL BEARING  |
|          | 27    | 000100 19800 | PUMP BODY   |
|          | 28    | 001103 19801 | BEARING COVER   |
|          | 29    | 911308 00000 | SEAL  |
|          | 30    | 948503 00000 | LOCK WASHER   |
|          | 31    | 945308 00000 | SOCKET HEAD SCREW   |
|          | 32    | 951703 00000 | LOCKING WASHER  |
|          | 33    | 945373 00000 | SOCKET HEAD SCREW   |
|          | 36    | 945313 00000 | SOCKET HEAD SCREW   |
|          | 41    | 013900 19800 | SEALING BUSH  |
|          | 42    | 911468 00000 | DISTANCE DISC 32X55X0,025   |
|          | 43    | 911469 00000 | DISTANCE DISC 32X55X0,05  |
|          | 44    | 911470 00000 | DISTANCE DISC 32X55X0,1   |
|          | 45    | 911471 00000 | DISTANCE DISC 32X55X0,2   |
|          | 48    | 947742 00000 | KEY   |
|          | 49    | 000600 19800 | IMPELLER  |
|          | 50    | 001900 24000 | LOCKING PLATE   |
|          | 51    | 001800 24000 | SCREW   |
|          | 63    | 000200 19800 | HOUSING LID   |
|          | 68    | 945225 00000 | HEX-HEAD SCREW  |
|          | 101   | 007400 19800 | SILENCER HOUSING  |
|          | 102.1 | 007600 94000 | STRAINER TUBE (SV 7.330/1-01)   |
|          | 102.2 | 007601 94000 | STRAINER TUBE (SV 7.330/2-01 + SV 7.330/5)                                  |
|          | 103   | 907704 10000 | SILENCER SPONGE   |
|          | 104   | 907500 19800 | SEAL  |
|          | 105   | 007805 19800 | FLANGE  |
|          | 106   | 903808 01000 | SCREW   |
|          | 107   | 903809 01000 | SCREW   |
|          | 109   | 945226 00000 | HEX. HEAD SCREW   |
|          | 113   | 040100 19800 | FILTER HOUSING  |
|          | 114   | 945321 00000 | SOCKET HEAD SCREW   |
|          | 116   | 903807 01000 | SCREW   |
|          | 118   | 945372 00000 | SOCKET HEAD SCREW   |
|          | 121   | 951038 00000 | STUD  |
|          | 125   | 909548 00000 | <b>FILTER CARTRIDGE (1x)<sup>1)</sup></b>                                   |
|          | 127   | 040202 19800 | FILTER COVER  |
|          | 131   | 921503 00000 | STAR GRIP   |
|          | 136   | 040203 19800 | FILTER COVER  |
|          | 137   | 945383 00000 | SOCKET HEAD SCREW   |
|          | 139   | 016600 19800 | CONNECTING PIECE  |
|          | 181   | 015500 19800 | REDUCING PIECE  |
|          | 183   | 005601 19800 | CAP   |
|          | 184   | 907502 19800 | GASKET  |
|          | 185   | 005600 19800 | CAP   |
|          | 186   | 945222 00000 | HEX HEAD SCREW  |
|          | 187   | 945155 00000 | HEX-HEAD SCREW  |
|          | 201   | 015102 19800 | FOOT  |
|          | 202   | 945224 00000 | HEX-HEAD SCREW  |
|          | 203   | 949451 00000 | WASHER  |
|          | 204   | 951906 00000 | RUBBER BUSHING  |
|          | 205   | 015101 19800 | FOOT  |
|          | 207   | 945328 00000 | SOCKET HEAD SCREW   |

<sup>1)</sup> necessary order quantity / maintenance (F / DSF / VSF)

| INDEX | Pos.  | Ident No.    | Description                                  |
|-------|-------|--------------|--|
|       | 301   | 007401 19800 | SILENCER HOUSING                             |
|       | 302   | 907600 80000 | STRAINER GAUZE                               |
|       | 303   | 907704 20000 | SILENCER SPONGE                              |
|       | 400.1 | 733701 99609 | VALVE CORE, SV 7.330/1; 3KW; VACUUM          |
|       | 400.2 | 733702 99609 | VALVE CORE, SV 7.330/1; 3+4KW; PRESSURE      |
|       | 400.3 | 733703 99609 | VALVE CORE, SV 7.330/2; 3KW; PRESSURE+VACUUM |

<sup>1)</sup> necessary order quantity / maintenance (F / DSF / VSF)

| INDEX    | Pos.         | No. Identification                                  | Designation  |
|----------|--------------|---|--|
| SV 7.330 | U            | 570400 19800  | <b>KIT DE TRANSFORMATION /1➔/2</b><br>(POS: 32, 104, 181, 183, 184, 185, 186, 187) |
|          | 10           | 741315 00000  | AMORTISSEUR EN CAOUTCHOUC  |
|          | 11           | 515100 19800  | PIED   |
|          | 12           | 515101 19800  | PIED   |
|          | 21           | 018300 94000  | PLAQUE   |
|          | 22           | 001103 94001  | COUVERCLE DE ROULEMENTE  |
|          | 23           | 906611 10000  | ROULEMENT A BILLES   |
|          | 27           | 000100 19800  | CORP DE POMPE  |
|          | 28           | 001103 19801  | COUVERCLE DE ROULEMENT   |
|          | 29           | 911308 00000  | JOINT  |
|          | 30           | 948503 00000  | RONDELLE ÉLASTIQUE   |
|          | 31           | 945308 00000  | VIS HEXAGONALE INTERNE   |
|          | 32           | 951703 00000  | RONDELLE À RESSORT   |
|          | 33           | 945373 00000  | VIS HEXAGONALE INTERNE   |
|          | 36           | 945313 00000  | VIS HEXAGONALE INTERNE   |
|          | 41           | 013900 19800  | BOISSEAU ETANCHANT   |
|          | 42           | 911468 00000  | DISQUE AJUSTAGE 32X55X0,025  |
|          | 43           | 911469 00000  | DISQUE AJUSTAGE 32X55X0,05   |
|          | 44           | 911470 00000  | DISQUE AJUSTAGE 32X55X0,1  |
|          | 45           | 911471 00000  | DISQUE AJUSTAGE 32X55X0,2  |
|          | 48           | 947742 00000  | CLAVETTE   |
|          | 49           | 000600 19800  | ROUE   |
|          | 50           | 001900 24000  | RONDELLE DE SECURITE   |
|          | 51           | 001800 24000  | VIS  |
|          | 63           | 000200 19800  | COUVERCLE  |
|          | 68           | 945225 00000  | VIS HEXAGONALE   |
|          | 101          | 007400 19800  | CARCASSE SILENCIEUX  |
| 102.1    | 007600 94000 | GRILLE POUR SILENCIEUX (SV 7.330/1-01)              |  |
| 102.2    | 007601 94000 | GRILLE POUR SILENCIEUX (SV 7.330/2-01 + SV 7.330/5) |  |
| 103      | 907704 10000 | MOUSSE POUR SILENCIEUX                              |  |
| 104      | 907500 19800 | JOINT   |  |
| 105      | 007805 19800 | BRIDE   |  |
| 106      | 903808 01000 | VIS   |  |
| 107      | 903809 01000 | VIS   |  |
| 109      | 945226 00000 | VIS HEXAGONALE                                      |  |
| 113      | 040100 19800 | CARTER FILTRE                                       |  |
| 114      | 945321 00000 | VIS HEXAGONALE INTERNE                              |  |
| 116      | 903807 01000 | VIS   |  |
| 118      | 945372 00000 | VIS HEXAGONALE INTERNE                              |  |
| 121      | 951038 00000 | GOUJON  |  |
| 125      | 909548 00000 | <b>CARTOUCHE FILTRANTE (1x)<sup>1)</sup></b>        |  |
| 127      | 040202 19800 | COUVERCLE DU FILTRE                                 |  |
| 131      | 921503 00000 | POIGNEE-ETOILE                                      |  |
| 136      | 040203 19800 | COUVERCLE DU FILTRE                                 |  |
| 137      | 945383 00000 | VIS HEXAGONALE INTERNE                              |  |
| 139      | 016600 19800 | PIECE DE RACCORDEMENT                               |  |
| 181      | 015500 19800 | PIECE DE REDUCTION                                  |  |
| 183      | 005601 19800 | COUVERCLE   |  |
| 184      | 907502 19800 | JOINT   |  |
| 185      | 005600 19800 | COUVERCLE   |  |
| 186      | 945222 00000 | VIS SIX-PANS  |  |
| 187      | 945155 00000 | VIS HEXAGONALE                                      |  |
| 201      | 015102 19800 | PIED  |  |
| 202      | 945224 00000 | VIS HEXAGONALE                                      |  |
| 203      | 949451 00000 | RONDELLE  |  |
| 204      | 951906 00000 | PROTECTION EN CAOUTCHOUC                            |  |
| 205      | 015101 19800 | PIED  |  |
| 207      | 945328 00000 | VIS HEXAGONALE INTERNE                              |  |

<sup>1)</sup> quantité nécessaire / entretien (F / DSF / VSF)

| INDEX | Pos.  | No. Identification | Designation                             |
|-------|-------|--------------------|---|
|       | 301   | 007401 19800       | CARCASSE SILENCIEUX                     |
|       | 302   | 907600 80000       | GRILLE POUR SILENCIEUX                  |
|       | 303   | 907704 20000       | MOUSSE POUR SILENCIEUX                  |
|       | 400.1 | 733701 99609       | SOUPAPE, SV 7.330/1; 3KW; VIDE          |
|       | 400.2 | 733702 99609       | SOUPAPE, SV 7.330/1; 3+4KW; PRESSION    |
|       | 400.3 | 733703 99609       | SOUPAPE, SV 7.330/2; 3KW; PRESSION+VIDE |

<sup>1)</sup> quantité nécessaire / entretien (F / DSF / VSF)

| INDICE   | Pos.  | No. Identificazione | Designazione   |
|----------|-------|---------------------|--|
| SV 7.330 | U     | 570400 19800        | <b>SET DI TRASFORMAZIONE /1➡/2</b><br>(POS: 32, 104, 181, 183, 184, 185, 186, 187) |
|          | 10    | 741315 00000        | AMMORTIZZATORE IN GOMMA  |
|          | 11    | 515100 19800        | PIEDE  |
|          | 12    | 515101 19800        | PIEDE  |
|          | 21    | 018300 94000        | DISCO  |
|          | 22    | 001103 94001        | COPERCHIO CUSCINETTO   |
|          | 23    | 906611 10000        | CUSCINETTO A SFERA   |
|          | 27    | 000100 19800        | CARCASSA   |
|          | 28    | 001103 19801        | COPERCHIO CUSCINETTO   |
|          | 29    | 911308 00000        | GUARNIZIONE  |
|          | 30    | 948503 00000        | ANELLO A MOLLA   |
|          | 31    | 945308 00000        | VITE ESAGONALE INTERNA   |
|          | 32    | 951703 00000        | DISCO A MOLLA  |
|          | 33    | 945373 00000        | VITE ESAGONALE INTERNA   |
|          | 36    | 945313 00000        | VITE ESAGONALE INTERNA   |
|          | 41    | 013900 19800        | BUSSOLA GUARNIRANTE  |
|          | 42    | 911468 00000        | DISCO GIUOCO 32X55X0,025   |
|          | 43    | 911469 00000        | DISCO GIUOCO 32X55X0,05  |
|          | 44    | 911470 00000        | DISCO GIUOCO 32X55X0,1   |
|          | 45    | 911471 00000        | DISCO GIUOCO 32X55X0,2   |
|          | 48    | 947742 00000        | CHIAVETTA  |
|          | 49    | 000600 19800        | GIRANTE  |
|          | 50    | 001900 24000        | RONDELLA DI SICUREZZA  |
|          | 51    | 001800 24000        | VITE   |
|          | 63    | 000200 19800        | COPERCHIO  |
|          | 68    | 945225 00000        | VITE ESAGONALE   |
|          | 101   | 007400 19800        | CARCASSA SILEZIATORE   |
|          | 102.1 | 007600 94000        | TUBO-CRIVELLO (SV 7.330/1-01)  |
|          | 102.2 | 007601 94000        | TUBO-CRIVELLO (SV 7.330/2-01 + SV 7.330/5)   |
|          | 103   | 907704 10000        | MATERIALE PER SILENZIATORE   |
|          | 104   | 907500 19800        | GUARNIZIONE  |
|          | 105   | 007805 19800        | FLANGIA  |
|          | 106   | 903808 01000        | VITE   |
|          | 107   | 903809 01000        | VITE   |
|          | 109   | 945226 00000        | VITE ESAGONALE   |
|          | 113   | 040100 19800        | CARCASSA DEL FILTRO  |
|          | 114   | 945321 00000        | VITE ESAGONALE INTERNA   |
|          | 116   | 903807 01000        | VITE   |
|          | 118   | 945372 00000        | VITE ESAGONALE INTERNA   |
|          | 121   | 951038 00000        | VITE PRIGIONIERA   |
|          | 125   | 909548 00000        | <b>CARTUCCIA FILTRO (1x)<sup>1)</sup></b>  |
|          | 127   | 040202 19800        | COPERCHIO FILTRO   |
|          | 131   | 921503 00000        | MANOPOLA A CROCIERA  |
|          | 136   | 040203 19800        | COPERCHIO FILTRO   |
|          | 137   | 945383 00000        | VITE ESAGONALE INTERNA   |
|          | 139   | 016600 19800        | PEZZO DI RACORDO   |
|          | 181   | 015500 19800        | GIUNTO DI RIDUZIONE  |
|          | 183   | 005601 19800        | COPERCHIO  |
|          | 184   | 907502 19800        | GUARNIZIONE  |
|          | 185   | 005600 19800        | COPERCHIO  |
|          | 186   | 945222 00000        | VITE ESAGONALE   |
|          | 187   | 945155 00000        | VITE ESAGONALE   |
|          | 201   | 015102 19800        | PIEDE  |
|          | 202   | 945224 00000        | VITE ESAGONALE   |
|          | 203   | 949451 00000        | RONDELLA   |
|          | 204   | 951906 00000        | PROTEZIONE IN GOMMA  |
|          | 205   | 015101 19800        | PIEDE  |
|          | 207   | 945328 00000        | VITE ESAGONALE INTERNA   |

<sup>1)</sup> quantità di ordinazione necessari / manutenzione (F / DSF / VSF)

| INDICE | Pos.  | No. Identificazione | Designazione                              |
|--------|-------|---------------------|---|
|        | 301   | 007401 19800        | CARCASSA SILENZIATORE                     |
|        | 302   | 907600 80000        | GRIGLIA PER SILENZIATORE                  |
|        | 303   | 907704 20000        | MATERIALE PER SILENZIATORE                |
|        | 400.1 | 733701 99609        | VALVOLA, SV 7.330/1; 3KW; VUOTO           |
|        | 400.2 | 733702 99609        | VALVOLA, SV 7.330/1; 3+4KW; PRESSIONE     |
|        | 400.3 | 733703 99609        | VALVOLA, SV 7.330/2; 3KW; PRESSIONE+VUOTO |

<sup>1)</sup> quantità di ordinazione necessari / manutenzione (F / DSF / VSF)




| ÍNDICE   | Pos.  | No. de pedido | Descripción  |
|----------|-------|---------------|--|
| SV 7.330 | U     | 570400 19800  | <b>EQUIPO PARA LA CONVERSIÓN /1➔/2</b><br>(POS: 32, 104, 181, 183, 184, 185, 186, 187) |
|          | 10    | 741315 00000  | AMORTIGUADOR DE GOMA   |
|          | 11    | 515100 19800  | PIE COMPLETO   |
|          | 12    | 515101 19800  | PIE COMPLETO, LATERAL  |
|          | 21    | 018300 94000  | DISCO DE PROTECCIÓN  |
|          | 22    | 001103 94001  | TAPA DE COJINETE   |
|          | 23    | 906611 10000  | COJINETE DE RODAMIENTO   |
|          | 27    | 000100 19800  | CARCASA  |
|          | 28    | 001103 19801  | TAPA DE COJINETE   |
|          | 29    | 911308 00000  | MANGUERA DE JUNTA  |
|          | 30    | 948503 00000  | ARANDELA DE MUELLE   |
|          | 31    | 945308 00000  | TORNILLO HEXAGONAL INTERIOR  |
|          | 32    | 951703 00000  | ARANDELA ELÁSTICA  |
|          | 33    | 945373 00000  | TORNILLO HEXAGONAL INTERIOR  |
|          | 36    | 945313 00000  | TORNILLO HEXAGONAL INTERIOR  |
|          | 41    | 013900 19800  | CASQUILLO DE JUNTA   |
|          | 42    | 911468 00000  | ARANDELA DISTANCIADORA 32X55X0,025   |
|          | 43    | 911469 00000  | ARANDELA DISTANCIADORA 32X55X0,050   |
|          | 44    | 911470 00000  | ARANDELA DISTANCIADORA 32X55X0,100   |
|          | 45    | 911471 00000  | ARANDELA DISTANCIADORA 32X55X0,200   |
|          | 48    | 947742 00000  | LENGÜETA DE AJUSTE   |
|          | 49    | 000600 19800  | RUEDA CORREDERA  |
|          | 50    | 001900 24000  | CHAPA DE ASEGURAMIENTO   |
|          | 51    | 001800 24000  | TORNILLO TERMINAL DE ÁRBOL   |
|          | 63    | 000200 19800  | TAPA DE CARCASA  |
|          | 68    | 945225 00000  | TORNILLO DE CABEZA HEXAGONAL   |
|          | 101   | 007400 19800  | CARCASA DE SILENCIADOR   |
|          | 102.1 | 007600 94000  | TUBO DE CRIBA (SV 7.330/1-01)  |
|          | 102.2 | 007601 94000  | TUBO DE CRIBA (SV 7.330/2-01 + SV 7.330/5)   |
|          | 103   | 907704 10000  | AMORTIGUADOR   |
|          | 104   | 907500 19800  | JUNTA  |
|          | 105   | 007805 19800  | BRIDA ROSCADA  |
|          | 106   | 903808 01000  | TORNILLO TIRANTE   |
|          | 107   | 903809 01000  | TORNILLO TIRANTE   |
|          | 109   | 945226 00000  | TORNILLO DE CABEZA HEXAGONAL   |
|          | 113   | 040100 19800  | CARCASA DE FILTRO  |
|          | 114   | 945321 00000  | TORNILLO HEXAGONAL INTERIOR  |
|          | 116   | 903807 01000  | TORNILLO TIRANTE   |
|          | 118   | 945372 00000  | TORNILLO HEXAGONAL INTERIOR  |
|          | 121   | 951038 00000  | ESPÁRRAGO  |
|          | 125   | 909548 00000  | <b>CARTUCHO DE FILTRO (1x) <sup>1)</sup></b>   |
|          | 127   | 040202 19800  | TAPA DE FILTRO   |
|          | 131   | 921503 00000  | EMPUÑADURA DE ESTRELLA   |
|          | 136   | 040203 19800  | TAPA DE FILTRO   |
|          | 137   | 945383 00000  | TORNILLO HEXAGONAL INTERIOR  |
|          | 139   | 016600 19800  | PIEZA DE EMPALME   |
|          | 181   | 015500 19800  | PIEZA DE REDUCCIÓN   |
|          | 183   | 005601 19800  | TAPA   |
|          | 184   | 907502 19800  | JUNTA  |
|          | 185   | 005600 19800  | TAPA   |
|          | 186   | 945222 00000  | TORNILLO DE CABEZA HEXAGONAL   |
|          | 187   | 945155 00000  | TORNILLO DE CABEZA HEXAGONAL   |
|          | 201   | 015102 19800  | PIE  |
|          | 202   | 945224 00000  | TORNILLO DE CABEZA HEXAGONAL   |
|          | 203   | 949451 00000  | ARANDELA   |
|          | 204   | 951906 00000  | BOQUILLA DE CABLE  |
|          | 205   | 015101 19800  | PIE  |
|          | 207   | 945328 00000  | TORNILLO HEXAGONAL INTERIOR  |

<sup>1)</sup> cantidad necesario / mantenimiento (F / DSF / VSF)




| ÍNDICE | Pos.  | No. de pedido | Descripción                             |
|--------|-------|---------------|---|
|        | 301   | 007401 19800  | CARCASA DE SILENCIADOR                  |
|        | 302   | 907600 80000  | TUBO DE CRIBA                           |
|        | 303   | 907704 20000  | AMORTIGUADOR                            |
|        | 400.1 | 733701 99609  | VÁLVULA, SV 7.330/1; 3KW; VACIO         |
|        | 400.2 | 733702 99609  | VÁLVULA, SV 7.330/1; 3+4KW; PRESION     |
|        | 400.3 | 733703 99609  | VÁLVULA, SV 7.330/2; 3KW; PRESION+VACIO |

<sup>1)</sup> cantidad necesario / mantenimiento (F / DSF / VSF)



| SV 7.330/-XX  | Variante<br> | Pos. <sup>2)</sup> | Bestell Nr. / Ident No. / No. Identification /<br>No. Identificazione / No. De pedido |   | Beschreibung / Description / Designation / Designazione / Desripcion   |
|---|---|--------------------|---|---|--|
|   |   |                    |      |    |  |
| ① /X-05<br>Korrosionsschutz<br>corrosion protection<br>protection contre la corrosion<br>protezione anti-corrosione<br>protección contra la corrosión |   |                    | 570410 19800  | <del>570400 19800</del>   | <b>UMBAUSATZ /1→2 / CONVERSION KIT / KIT DE TRANSFORMATION / SET DI TRASFORMAZIONE / EQUIPO PARA LA CONVERSIÓN</b>                               |
|   | 181   |                    | 015510 19800  | <del>015500 19800</del>   | - REDUZIERSTÜCK / REDUCING PIECE / PIECE DE REDUCTION / GIUNTO DI RIDUZIONE / PIEZA DE REDUCCIÓN   |
|   | 183   |                    | 005611 19800  | <del>005601 19800</del>   | - DECKEL / CAP / COUVERCLE / COPERCHIO / TAPA  |
|   | 185   |                    | 005610 19800  | <del>005600 19800</del>   | - DECKEL / CAP / COUVERCLE / COPERCHIO / TAPA  |
|   |   |                    | -   | -   | <b>VERDICHTER / VAKUUMPUMPE // BLOWER / VACUUM PUMP / SOUFFLANTE / POMPE A VIDE // SOFFIANTE / POMPA A VUOTO // SOPLANTES / BOMBA DE VACIO</b>   |
|   | 23  |                    | 906612 10000  | <del>906611 10000</del>   | - LAGER / BALL BEARING / ROULEMENT A BILLES / CUSCINETTO A SFERA / COJINETE DE RODAMIENTO  |
|   | 27  |                    | 000110 19800  | <del>000100 19800</del>   | - GEHÄUSE / PUMP BODY / CORP DE POMPE / CARCASSA / CARCASA   |
|   | 28  |                    | 001100 19800  | <del>001103 19800</del>   | - LAGERDECKEL / BEARING COVERL / COUVERCLE DE ROULEMENT / COPERCHIO CUSCINETTO / TAPA DE COJINETE  |
|   | 29  |                    | 906592 00000  | <del>911308 00000</del>   | - WELLENDICHTRING / SEAL / JOINT / GUARNIZIONE / MANGUERA DE JUNTA   |
|   | 49  |                    | 000610 19800  | <del>000600 19800</del>   | - LAUFRAD / IMPELLER / ROUE / GIRANTE / RUEDA CORREDERA  |
|   | 63  |                    | 000210 19800  | <del>000200 19800</del>   | - GEHÄUSEDECKEL / HOUSING LID / COUVERCLE / COPERCHIO / TAPA DE CARCASA  |
|   |   |                    | -   | -   | <b>SCHALLDÄMPFER MIT FILTER / SILENCER WITH FILTER / SILENCIEUX AVEC FILTRE / SILENZIATORE CON FILTRO / SILENCIADOR CON FILTRO</b>               |
|   | 113   |                    | 040110 19800  | <del>040100 19800</del>   | - FILTERGEHÄUSE / FILTER HOUSING / CARTER FILTRE / CARCASSA DEL FILTRO / CARCASA DE FILTRO   |
|   | 301   |                    | 007411 19800  | <del>007401 19800</del>   | - SCHALLDÄMPFERGEHÄUSE / SILENCER HOUSING / CARCASSE SILENCIEUX / CARCASSA SILENZIATORE / CARCASA DE SILENCIADOR                                 |
|   | 302   |                    | 907600 80100  | <del>907600 80000</del>   | - SIEBROHR / STRAINER GAUZE / GRILLE POUR SILENCIEUX / GRIGLIA PER SILENZIATORE / TUBO DE CRIBA  |
|   |   |                    | -   | -   | <b>SCHALLDÄMPFER MIT VENTILEINSATZ / SILENCER WITH VALVE CORE / SILENCIEUX AVEC SOUPAPE / SILENZIATORE CON VALVOLA / SILENCIADOR CON VÁLVULA</b> |
|   | 113   |                    | 040110 19800  | <del>040100 19800</del>   | - FILTERGEHÄUSE / FILTER HOUSING / CARTER FILTRE / CARCASSA DEL FILTRO / CARCASA DE FILTRO   |
|   | 139   |                    | 016610 19800  | <del>016600 19800</del>   | - ANSCHLUSSSTÜCK / CONNECTING PIECE / PIECE DE RACCORDEMENT / PEZZO DI RACORDO / PIEZA DE EMPALME  |
|   | 301   |                    | 007411 19800  | <del>007401 19800</del>   | - SCHALLDÄMPFERGEHÄUSE / SILENCER HOUSING / CARCASSE SILENCIEUX / CARCASSA SILENZIATORE / CARCASA DE SILENCIADOR                                 |
|   | 302   |                    | 907600 80100  | <del>907600 80000</del>   | - SIEBROHR / STRAINER GAUZE / GRILLE POUR SILENCIEUX / GRIGLIA PER SILENZIATORE / TUBO DE CRIBA  |
|   |   | -                  | -   | <b>SCHALLDÄMPFER / SILENCER / SILENCIEUX / SILENZIATORE / SILENCIADOR</b>   |  |
| 101   |   | 007410 19800       | <del>007400 19800</del>   | - SCHALLDÄMPFERGEHÄUSE / SILENCER HOUSING / CARCASSE SILENCIEUX / CARCASSA SILENZIATORE / CARCASA DE SILENCIADOR  |  |
| 102   |   | 007610 94000       | <del>007600 94000</del>   | - SIEBROHR / STRAINER GAUZE / GRILLE POUR SILENCIEUX / GRIGLIA PER SILENZIATORE / TUBO DE CRIBA   |  |
|   |   | -                  | -   | <b>SCHALLDÄMPFER MIT VENTILEINSATZ + FILTER / SILENCER WITH VALVE CORE + FILTER / SILENCIEUX AVEC SOUPAPE + FILTRE / SILENZIATORE CON VALVOLA + FILTRO / SILENCIADOR CON VÁLVULA + FILTRO</b> |  |
| 113   |   | 040110 19800       | <del>040100 19800</del>   | - FILTERGEHÄUSE (2x) / FILTER HOUSING / CARTER FILTRE / CARCASSA DEL FILTRO / CARCASA DE FILTRO   |  |
| 139   |   | 016610 19800       | <del>016600 19800</del>   | - ANSCHLUSSSTÜCK / CONNECTING PIECE / PIECE DE RACCORDEMENT / PEZZO DI RACORDO / PIEZA DE EMPALME   |  |

<sup>2)</sup> variantenabhängige Bauteile / variant-dependent components / composants variante-dependantes / componenti variante-dispendenti / componentes variante-dependientes

| SV 7.330/-XX  | Variante<br> | Pos. <sup>2)</sup> | Bestell Nr. / Ident No. / No. Identification /<br>No. Identificazione / No. De pedido |   | Beschreibung / Description / Designation / Designazione / Desripcion   |
|---|---|--------------------|---|---|--|
|   |   |                    |      |          |  |
| ② /X-401<br>mit Frequenzumrichter<br>with frequency inverter<br>avec convertisseur de fréquence<br>con convertitore di frequenza<br>con convertidor de frecuencia |   |                    | -   | -   | <b>VERDICHTER / VAKUUMPUMPE // BLOWER / VACUUM PUMP / SOUFFLANTE / POMPE A VIDE // SOFFIANTE / POMPA A VUOTO // SOPLANTES / BOMBA DE VACIO</b> |
|   |   | 49                 | 000602 19800  | <del>000600 19800</del>   | - LAUFRAD / IMPELLER / ROUE / GIRANTE / RUEDA CORREDERA  |
|   |   | 50                 | 949409 00000  | <del>001900 24000</del>   | - UNTERLEGSCHLEIBE / WASHER / RONDELLE / RONDELLA / ARANDELA   |
|   |   | 51                 | 901806 00000  | <del>001800 24000</del>   | - WELLENENDSCHRAUBE / SCREW / VIS / VITE / TORNILLO TERMINAL DE ÁRBOL  |
|   |   | 500                | <b>769302 40991</b>   | -   | <b>FREQUENZUMRICHTER / FREQUENCY INVERTER / CONVERTISSEUR DE FRÉQUENCE / CONVERTITORE DI FREQUENZA / CONVERTIDOR DE FRECUENCIA</b>             |
|   |   | 501                | 945307 00000  | -   | -INNENSECHSKANTSCHRAUBE / SOCKET HEAD SCREW / VIS HEXAGONALE INTERNE / VITE ESAGONALE INTERNA / TORNILLO HEXAGONAL INTERIOR                    |
|   | 502   | 951704 00000       | -   | - FEDERSCHLEIBE / LOCKING WASHER / RONDELLE À RESSORT / DISCO A MOLLA / ARANDELA ELÁSTICA |  |
| ③ /2-501<br>Sonderausführung<br>Special design<br>Fabrication spéciale<br>Modello speciale<br>Versión especial  |   |                    |   |   | <b>VERDICHTER / VAKUUMPUMPE // BLOWER / VACUUM PUMP / SOUFFLANTE / POMPE A VIDE // SOFFIANTE / POMPA A VUOTO // SOPLANTES / BOMBA DE VACIO</b> |
|   |   | 27                 | 000102 19800  | <del>000100 19800</del>   | - GEHÄUSE / PUMP BODY / CORP DE POMPE / CARCASSA / CARCASA   |
|   | 63  | 000202 19800       | <del>000200 19800</del>   | - GEHÄUSEDECKEL / HOUSING LID / COUVERCLE / COPERCHIO / TAPA DE CARCASA                   |  |
| ④ /2-600<br>Sonderausführung<br>Special design<br>Fabrication spéciale<br>Modello speciale<br>Versión especial  |   |                    |   |   | <b>VERDICHTER / VAKUUMPUMPE // BLOWER / VACUUM PUMP / SOUFFLANTE / POMPE A VIDE // SOFFIANTE / POMPA A VUOTO // SOPLANTES / BOMBA DE VACIO</b> |
|   | 49  | 000602 19800       | <del>000600 19800</del>   | - LAUFRAD / IMPELLER / ROUE / GIRANTE / RUEDA CORREDERA                                   |  |

<sup>2)</sup> variantenabhängige Bauteile / variant-dependent components / composants variante-dependantes / componenti variante-dispendenti / componentes variante-dependientes